



integrated proteomics solutions.

Phosphopeptide Standard Kit

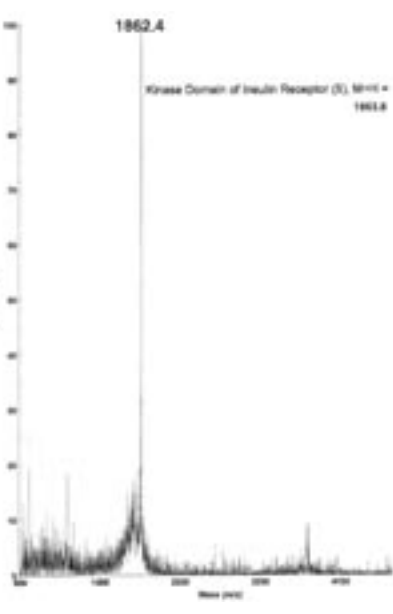
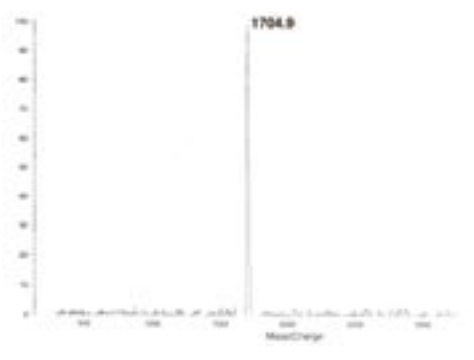
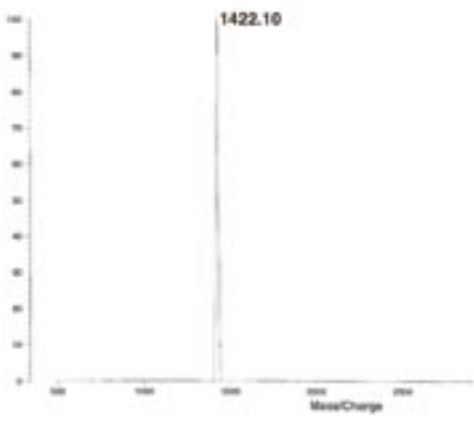
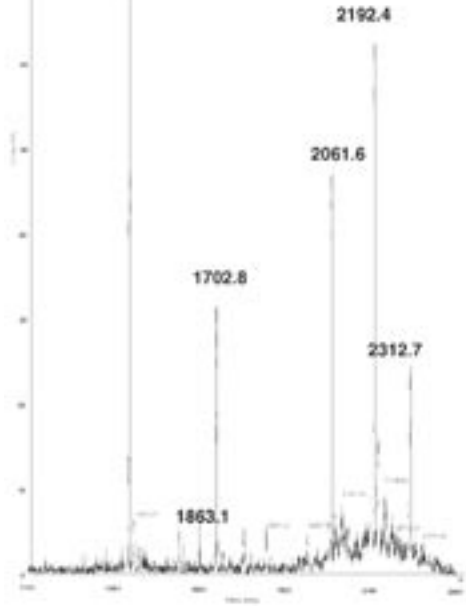
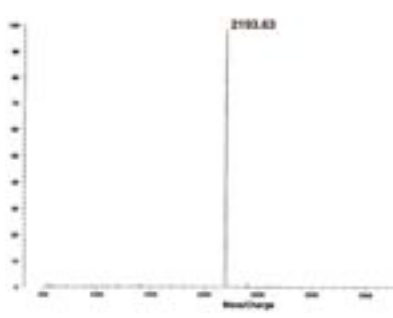
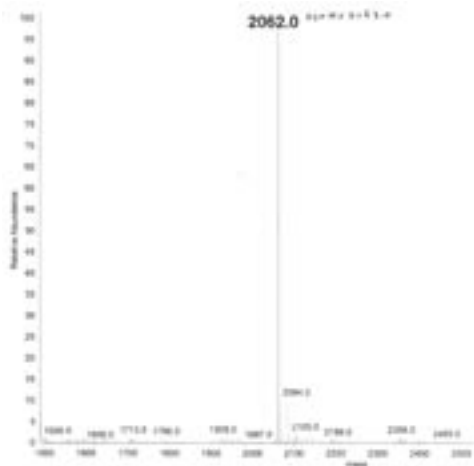
AnaSpec, Inc. • 2149 O'Toole Ave. • San Jose, CA 95131 • 800-452-5530 • Fax 408-452-5059 • service@anaspec.com • www.anaspec.com

Cat#: 61145

This kit contains 6 individually packed phosphopeptides at 10 µg each. They can be used in liquid chromatography and mass spectrometry for the analysis, detection for affinity purification of phosphorylated peptides.

PHOSOPHOPEPTIDES	MW
FQ-pS-EEQQQTEDELQDK (Bovine b-Casein, monophospho cat# 61146, \$120/mg)	2062.0
DLDVPIPIGRFDRRV-pS-VAEE (PKA Regulatory Subunit II Substrate, cat# 24516, \$295/mg)	2192.4
KRP-pS-QRHGSKY-NH2 (UOM9, Phosphorylated PKC Substrate-3, cat# 20294, \$175/mg)	1422.5
SFVLNPTNIGM-pS-KSSQGHVTK (DAM1 [221-241] peptide, cat# 61242, \$180/mg)	2312.6
TRDIYETDpYYRK (Kinase Domain of Insulin Receptor, cat# 20274, \$195/mg)	1702.8
TRDIpYETDpYpYRK (Kinase Domain of Insulin Receptor, cat# 20272, \$240/mg)	1862.8

References: Posewitz, MC. and P. Tempst, *Anal. Chem.* 71, 2883 (1999)
Show, W. et al. *J. Am. Soc. Mass Spectrom.* 11, 273 (2000)
Kim, J. et al. *J. Mass Spectrom.* 39, 208 (2004)
Liu, S. et al. *Rapid Commun. Mass Spectrom* 19, 2747 (2005)



Mass spectrometry of pooled 6 phosphopeptides. Pooled lyophilized peptides at 10 μ g each was dissolved in 50 μ l 50% Acetonitrile and 2-3 μ l spotted on the target plate. The cat# for this product is #61145-Pooled.