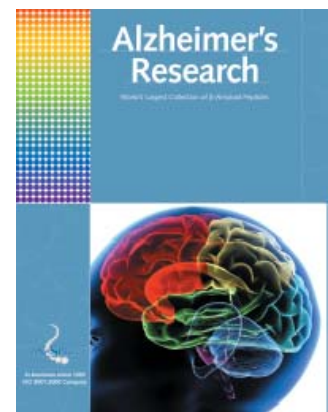


Neuroscience Research

- World's Largest collection of GO™ Peptides - catalog peptides ready to GO.
- Custom peptide synthesis
- Custom & catalog antibodies for Neuroscience Research
- Wide range of fluorescent physiological and neurological indicators
- Extensive reagents for luminescent and non-luminescent Ca²⁺ detection
- Neuroscience related assay kits - Secretase & MOG assay kits

Alzheimer's Research

World's Largest collection of β -Amyloid peptides β -Amyloid (1-40), (1-42) up to (1-49) & (1-55) Dye and/or biotin labeled β -Amyloid peptides
Anti-TAU antibodies (17 phosphospecific & 9 non-phosphospecific)
Assay Kits - SensoLyte™ α & β -Secretase assay kits DHL™ β -Amyloid (1-40) & (1-42) fluorescent sampler kits
Vital stains for amyloids - Congo Red & Thioflavin T



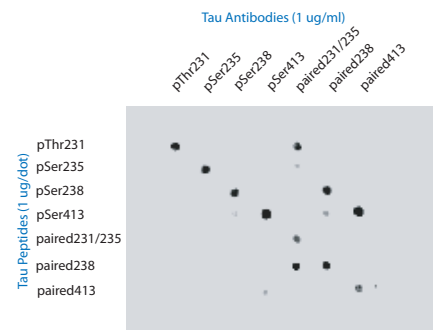
Alzheimer's Research Brochure

Neurotransmission

Opioids Related Peptides
Secretins, Somatostatins, and Tachykinins related peptides
Neuropeptides Neuropeptide Y, Pancreatic Polypeptide, Peptide YY Vasopressin, Oxytocin
Glutamate and Glutamate Receptor related peptides and antibodies
Substance P and analogs
Kinase/Phosphatase substrates

Neuroendocrine

Thyrotropin Releasing Hormones (TRH) and related peptides
Luteinizing Hormone Releasing Hormones (LHRH) and related peptides
Growth Hormone Releasing Hormone (GHRH) related peptides Ghrelin & Obestatin Growth Hormone Releasing Factor, GRF (1-29),(1-40),(1-44)
Somastatin and related peptides
Leptin related peptides (22-56), (57-74), (93-105) and (116-130)
Amylins, GIP and PACAPs



Neuroscience Research

Parkinson's & Prion Diseases

Prion protein (PrP) related peptides

Neurotensin peptides

Synuclein antibodies

Multiple Sclerosis and EAE

Extensive collection of MOG proteins & peptides

MOG recombinant proteins - human, mouse & rat specific

MOG peptides (35-55) & many more MOG peptide fragments

Myelin Basic Protein (MBP) fragments

Proteolipid Protein (PLP) fragments

OVA peptides

Quantitative ELISA Kits - Sensolyte™ anti-MOG (35-45) IgG & IgG Isotypes
(Catalog# 54465 to 54471)

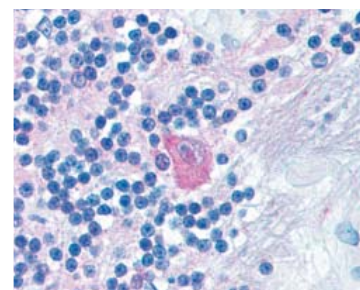
Other Neuroscience Research Related Product

Wide range of fluorescent physiological and neurological indicators

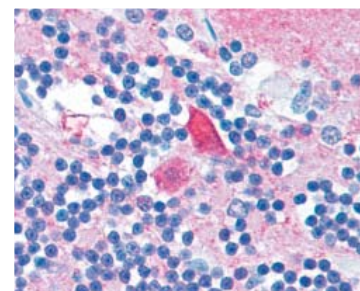
Luminescent and nonluminescent calcium indicators

Extensive array of Neuroscience research antibodies

Ion Channel Blockers - ω -Conotoxins, Chlorotoxin, Charybdotoxin and more



Immunohistochemistry staining of brain cerebellum, Golgi neuron probed with anti-Tau (paired 198,199,202,205) antibody (Cat# 54965).



Immunohistochemistry staining of brain cerebellum, Golgi neuron probed with anti-Tau (paired 212,214,217) antibody (Cat# 54969).

Custom Services Available
Peptide Synthesis
Antibody Production

