



Anti-Phospho-Ser/Thr/Tyr

CATALOG NO.: 53775

CLONE: SPM101

BACKGROUND:

This antibody recognizes serine, threonine, and tyrosine phosphorylated proteins as determined by ELISA using phosphorylated peptides. Reactivity has also been shown with phosphorylated proteins in western blots.

SOURCE & REACTIVITY:

Mouse anti-Phospho-Ser/Thr/Tyr monoclonal antibody was raised against a phosphoserine, phosphothreonine, and phosphotyrosine conjugated to protein carriers with the Ig Isotype being IgG1. Species reactivity includes all species.

APPLICATION:

The following concentration ranges are recommended starting points for this product.

WB (Ab 1-2 μ g/ml for 2hrs at room temperature (RT))

IP (Ab 2 μ g/mg protein lysate)

IFC

Kinase Assay

IHC (Formalin/paraffin)

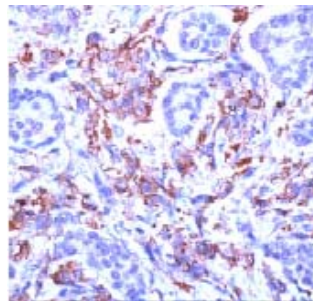
Working dilution: 1:20 for 10 min at RT

Staining of formalin-fixed tissues requires boiling tissue sections in 10mM citrate buffer, pH 6.0 for 10 min followed by cooling at RT for 20 min.

Positive Control: Breast carcinoma

Staining Pattern: Cell surface, cytoplasmic

NOTE: Milk-derived blocking solutions reportedly contain phosphoproteins that may inhibit phosphoamino acid antibody binding and therefore should be avoided.



Human breast carcinoma stained with anti-phospho pan (Cat. #53775)

This product is for in vitro research purposes only.

STORAGE:

0.25 ml antibody (at 200 μ g/ml), purified from ascites fluid by Protein G, in 1X PBS (pH 7.4) with 0.2% BSA and 0.05% sodium azide. Store at 2-8 °C for up to 1 year. Avoid repeated freeze thaw cycles