



Anti-S100A4

CATALOG NO.: 53839

BACKGROUND:

S100 belongs to the family of calcium binding proteins such as calmodulin and troponin C. S100A (M.W 11 kDa) is composed of a α and β chain, whereas S100B is composed of two beta chains. Antibody to S100 stains Schwannomas, ependymomas, astroglomas, almost all benign and malignant melanomas and their metastases. S100 protein is also expressed in the antigen presenting cells such as the Langerhans cells in skin and interdigitating reticulum cells in the paracortex of lymph nodes.

SOURCE & REACTIVITY:

Rabbit anti-S100A4 polyclonal antibody was raised against a recombinant protein encoding full length human S100A4. Species reactivity includes human, while others are not tested.

APPLICATION:

The following concentration ranges are recommended starting points for this product.

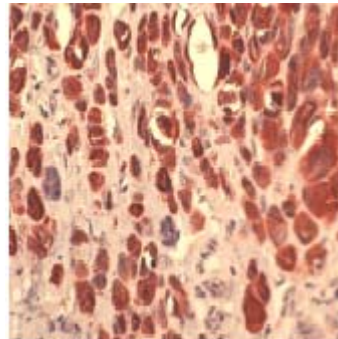
IHC (Formalin/paraffin)

Working dilution: 1:100 for 10 min at room temperature (RT)

Staining of formalin-fixed tissues requires boiling tissue sections in 10mM citrate buffer, pH 6.0 for 10 min followed by cooling at RT for 20 min.

Positive Control: Tonsil, melanoma.

Staining Pattern: Cytoplasmic



Melanoma
stained with
anti-S100A4
(Cat. #53839)

This product is for in vitro research purposes only.

STORAGE:

0.25 ml of affinity purified antibody at 0.2 mg/ml in 1X PBS (pH 7.4) with 0.2% BSA and 0.05% sodium azide. Store at 2-8 °C for up to 1 year. Avoid repeated freeze thaw cycles.