



SensoLyte® 520 MMP-2 Assay Kit *Fluorimetric*

Catalog #	71151
Unit Size	1 Kit
Kit Size	100 assays (96-well) or 250 assays (384-well)

This kit is optimized to detect MMP-2 activity using a 5-FAM/QXL™520 FRET peptide as substrate with its fluorescence monitored at Ex/Em=490 nm/520 nm upon proteolytic cleavage. Ample materials are provided to perform 100 assays in a 96-well format or 250 assays in a 384-well format. The kit has the following features:

- **Convenient Format:** All essential assay components are included.
- **Optimized Performance:** Optimal conditions for the detection of MMP-2 activity.
- **Enhanced Value:** Less expensive than the sum of individual components.
- **High Speed:** Minimal hands-on time.
- **Assured Reliability:** Detailed protocol and references are provided.

USA and Canada Ordering Information

AnaSpec Corporate Headquarter

2149 O'Toole Ave.
San Jose, CA 95131
Toll-Free: 800-452-5530
Tel: 408-452-5055
Fax: 408-452-5059
E-mail: service@anaspec.com
Internet: www.anaspec.com

International Ordering Information

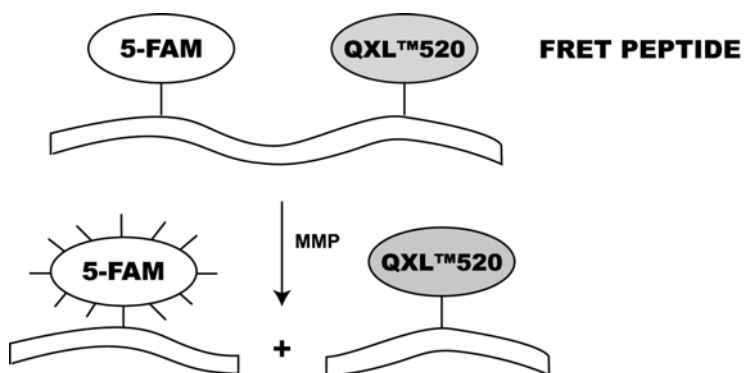
A list of international distributors is available at www.anaspec.com.

INTRODUCTION

Matrix metalloproteinases (MMPs) belong to the family of secreted or membrane-associated zinc endopeptidases capable of digesting extracellular matrix components.^{1,2} MMP-2 (72-kDa gelatinase-A) is involved in tumor development and metastasis,³⁻⁵ and is proposed as a therapeutic target for cancer.

The SensoLyte® 520 MMP-2 Assay Kit provides a convenient assay for high throughput screening of MMP-2 inducers and inhibitors. This kit can be used in detecting MMP-2 activity in a variety of biological samples using a 5-FAM/QXL™520 fluorescence resonance energy transfer (FRET)⁶ peptide. In the intact FRET peptide, the fluorescence of 5-FAM is quenched by QXL™520. Upon cleavage into two separate fragments by MMP-2 (**Scheme 1**), the fluorescence of 5-FAM is recovered, and can be monitored at excitation/emission wavelengths = 490 nm/520 nm. With excellent fluorescence quantum yield and longer wavelength, 5-FAM shows less interference from autofluorescence of test compounds and cellular components. Compared to an EDANS/DABCYL FRET substrate, this 5-FAM/QXL™520 substrate provides better assay sensitivity.

The assays are performed in a convenient 96-well or 384-well microplate format.



Scheme 1. Proteolytic cleavage of 5-FAM/QXL™520 FRET peptide by MMPs.

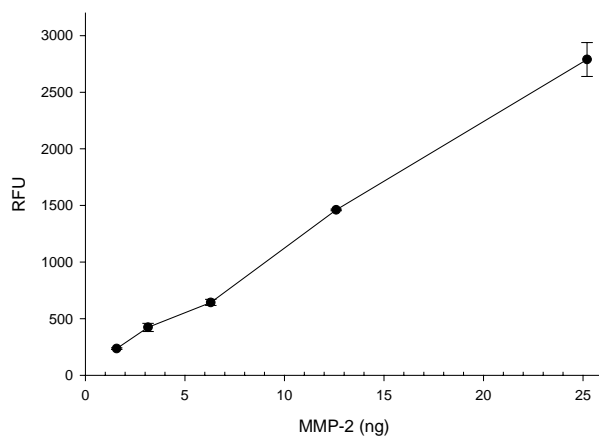


Figure 1. Sensitivity of SensoLyte® 520 MMP-2 assay kit.

Purified MMP-2 was first activated with 1 mM APMA and then serially diluted in assay buffer. Enzyme at each dilution was mixed with MMP-2 FRET substrate and then incubated at RT for 30 min. Endpoint fluorescence signal was recorded at Ex/Em=490 nm/520 nm with cut off at 515 nm (FlexStation 384II, Molecular Devices). The assay is able to detect as low as 1.5 ng MMP-2 (mean±S.D., n=2). *Note: Sensitivity also depends on the endogenous activity of MMP-2 in different preparations. MMP-2 from different sources will vary in its endogenous activity.*

KIT COMPONENTS, STORAGE AND HANDLING

Note: Store all kit components at -20 °C, and keep Components A and B away from light. If used frequently, Components D and E can be stored at 4 °C for convenience.

- Component A:** MMP-2 substrate (60 µL)
5-FAM/QXL™520 FRET peptide
Ex/Em=490 nm/520 nm upon cleavage
- Component B:** 5-FAM-Pro-Leu-OH, fluorescence reference standard (1 mM, 10 µL)
Ex/Em=490 nm/520 nm
- Component C:** APMA, 4-aminophenylmercuric acetate (1 M, 20 µL)
Caution: Contains organic mercury and must be handled with care. Dispose according to local regulations.
- Component D:** Assay buffer (20 mL)
- Component E:** Stop solution (10 mL)

OTHER MATERIALS REQUIRED (BUT NOT PROVIDED)

MMP-2: AnaSpec Cat#72005.

96-well or 384-well microplate: Black microplate provides better signal to noise ratio.

Fluorescence microplate reader: Capable of detecting emission at 520 nm with excitation at 490 nm.

PROTOCOL

Note 1: For fluorometer calibration, please refer to Appendix II (recommended for first time users).

Note 2: Please use Protocol A or B based on your needs.

Protocol A. Screening protease inhibitors using purified or recombinant MMP-2

1. Activate pro-MMP-2.

- Incubate pro-MMP-2 with 1 mM APMA (diluted Component C) for 1 hour at 37°C. Activate pro-MMP-2 immediately before the experiment.

Note 1: Keep activated enzyme on ice. Avoid vigorously vortexing the enzyme. Prolonged storage of activated enzyme will further de-activate the enzyme.

Note 2: APMA can be diluted with assay buffer (Component D). APMA belongs to the organic mercury class of compounds and must be handled with care! Dispose according to appropriate regulations.

Note 3: Activation of zymogen by APMA at higher protein concentration is preferred. After activation, the enzyme may be further diluted.

2. Prepare working solutions.

Note: Warm all kit components until thawed to room temperature before starting the experiments.

- **MMP-2 substrate solution:** Dilute MMP-2 substrate (Component A) 1: 100 in assay buffer (Component D) according to Table 1.

Table 1. MMP-2 substrate solution for one 96-well plate (100 assays)

Components	Volume
MMP-2 substrate (100X, component A)	50 µL
Assay buffer (component D)	4.95 mL
Total volume	5 mL

- **MMP-2 diluent:** Dilute activated MMP-2 to an appropriate concentration in assay buffer (Component D).

3. Set up enzymatic reaction.

- Add test compounds and MMP-2 diluent into microplate. The suggested total volume of MMP-2 diluent and test compound is 50 μL (96-well plate) or 20 μL (384-well plate).
- Simultaneously set up the following controls as deemed necessary:
 - Positive control contains MMP-2 diluent without test compound.
 - Inhibitor control contains MMP-2 diluent and a known MMP-2 inhibitor.
 - Vehicle control contains MMP-2 diluent and vehicle used in delivering test compound (e.g. DMSO).
 - Test compound control contains assay buffer and test compound. Some test compounds have strong autofluorescence and may give false results.
 - Substrate control contains assay buffer only.

Note: Use assay buffer (Component D) to bring the total volume of all the controls to 50 μL (96-well plate) or 20 μL (384-well plate).

4. Pre-incubation.

- Incubate the plate at the desired temperature for enzymatic reaction (e.g. 25°C or 37°C) for 10-15 min. Also incubate MMP-2 substrate solution at the same temperature.

5. Initiate the enzymatic reaction.

- Add 50 μL (96-well plate) or 20 μL (384-well plate) of MMP-2 substrate solution to each well. Mix the reagents completely by shaking the plate gently for 30-60 sec.
- Measure fluorescence signal:

For kinetic reading: Immediately start measuring fluorescence intensity at Ex/Em=490 \pm 20 nm/520 \pm 20 nm and continuously record data every 5 min for 30 to 60 min.

For end-point reading: Incubate the reaction at 37°C for 30 to 60 min. Keep plate from direct light. Optional: Add 50 μL (96-well plate) or 20 μL (384-well plate) per well of stop solution (Component E). Mix the reagents. Measure fluorescence intensity at Ex/Em=490 \pm 20 nm/520 \pm 20 nm.

- Data analysis: Refer to Appendix I.

Protocol B. Measuring MMP-2 activity in biological samples

Note: MMPs are usually present as a mixture in cells or tissue and since some MMPs recognize and cleave the same peptide substrate, you may need to isolate MMP-2 by immuno-affinity purification or other methods first before measuring its activity using our assay kit. According to our data, the FRET substrate in this kit can also be cleaved by MMP-1, 8, 9, 12, 13, and 14.

1. Prepare MMP-2 containing biological samples.

- Collect synovial fluids or supernatant of cell culture media (e.g. stimulated fibroblast) and centrifuge for 10-15 min at 1,000X g, 4°C. Collect the supernatant and store at -70°C until use.
- Homogenize tissues samples in assay buffer (Component D) containing 0.1% Triton-X 100, and centrifuged for 15 min at 10000x g at 4°C. Collect the supernatant and store at -70°C until use.

Note: Triton-X 100 is not provided.

2. Activate pro-MMPs.

- Incubate the MMP containing-samples with APMA (Component C) at a final concentration of 1 mM in the assay buffer (Component D) for 1 hour at 37°C. Activate MMP immediately before the experiment.

Note 1: Keep activated enzyme on ice. Avoid vigorously vortexing the enzyme. Prolonged storage will further de-activate the enzyme.

Note 2: APMA can be diluted with assay buffer (Component D). APMA belongs to the organic mercury class of compounds and must be handled with care! Dispose according to appropriate regulations.

3. Prepare working solutions.

Note: Warm all kit components until thawed to room temperature before starting the experiments.

- MMP-2 substrate solution: Dilute MMP-2 substrate (Component A) 1: 100 in assay buffer (Component D).

Table 1. MMP-2 substrate solution for one 96-well plate (100 assays)

Components	Volume
MMP-2 substrate (100X, Component A)	50 μ L
Assay buffer (Component D)	4.95 mL
Total volume	5 mL

4. Set up the enzymatic reaction.

- Add 50 μ L (96-well plate) or 20 μ L (384-well plate) per well of MMP-2 containing sample.
- Set up the following control:
 - Substrate control contains assay buffer [50 μ L/well (96-well plate) or 20 μ L/well (384-well plate)].
 - Positive control contains MMP-2 diluent [50 μ L/well (96-well plate) or 20 μ L/well (384-well plate)].

5. Initiate the enzymatic reaction.

- Add 50 μ L (96-well plate) or 20 μ L (384-well plate) per well of MMP-2 substrate solution to the sample and control wells. Mix the reagents by shaking the plate gently for 30 sec.
- Measure fluorescence signal:
 - For kinetic reading: Immediately start measuring fluorescence intensity at Ex/Em=490 nm \pm 20 /520 \pm 20 nm and continuously record data every 5 min for 30 to 60 min.
 - For end-point reading: Incubate the reaction at 37°C for 30 to 60 min. Keep plate away from direct light. Optional: Add 50 μ L (96-well plate) or 20 μ L (384-well plate) per well of stop solution (Component E). Mix the reagents and measure fluorescence intensity at Ex/Em=490 \pm 20 nm/520 \pm 20 nm.
- Data analysis: Refer to Appendix I.

Appendix I: Data Analysis

- The fluorescence reading from the substrate control well is the background fluorescence. This background reading should be subtracted from the readings of the other wells. The fluorescence readings are expressed in relative fluorescence units (RFU).
- For kinetic reading:
 - Plot data as RFU versus time for each sample. To convert RFU to concentration of the product of enzymatic reaction, please refer to Appendix II for setting up the fluorescence reference standard.
 - Determine the range of initial time points during which the reaction is linear. Typically, 10-15% conversion appears to be the optimal range.
 - Obtain the initial reaction velocity (V_0) in RFU/min. Determine the slope of the linear portion of the data plot.
 - A variety of data analyses can be done, e.g., determining inhibition %, EC_{50} , IC_{50} , K_m , K_i , etc.
- For endpoint reading:
 - Plot data as RFU versus concentration of test compounds or enzyme concentration (Figure 1).
 - A variety of data analyses can be done, e.g., determining inhibition %, EC_{50} , IC_{50} , etc.

Appendix II: Fluorometer Calibration

- **5-FAM fluorescence reference standard:** Dilute 1 mM 5-FAM-Pro-Leu-OH (Component B) to 5 μM in assay buffer. Do 1:2 serial dilutions to get concentrations of 2.5, 1.25, 0.625, 0.3125, 0.156, 0.078, include a water blank. Add 50 μL /well (96-well plate) or 20 μL /well (384-well plate) of the serially diluted 5-FAM-Pro-Leu-OH from 5 μM to 0 nM.
- Add 50 μL (96-well plate) or 20 μL (384-well plate) per well of MMP-2 substrate solution (refer to Step 3 of Protocol Bf or preparing substrate solution).

Note: MMP-2 substrate solution is added to the 5-FAM reference standard to correct for the absorptive quenching by the FRET peptide. If multiple concentrations of substrate are used, this step must be performed for each concentration.

- Optional: If the stop solution (Component E) was added into the enzymatic reaction before taking the end-point reading, the same volume of stop solution should be added to the reference standard wells for proper comparison.
- Plot 5-FAM fluorescence reference standard as RFU (relative fluorescence unit) versus concentration as in **Figure 2**.

Note: The final concentration of 5-FAM-Pro-Leu-OH reference standard is 2.5, 1.25, 0.625, 0.3125, 0.156, 0.078, 0.039, and 0 μM . This reference standard is used to calibrate the variation of different instruments and to account for experimental variability. It is also an indicator of the amount of final product of the MMP-2 enzymatic reaction.

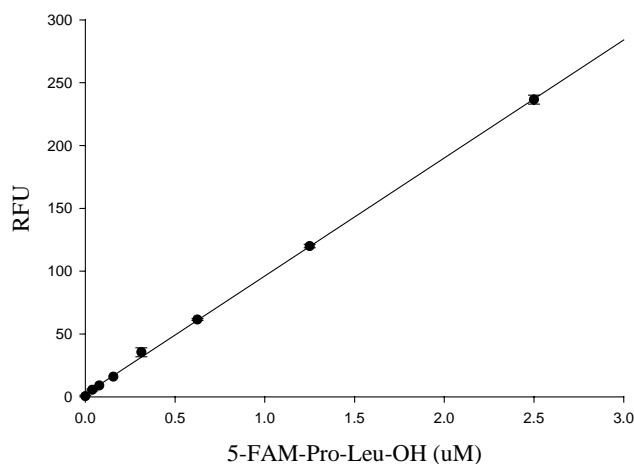


Figure 2. 5-FAM-Pro-Leu-OH reference standard curve.

5-FAM-Pro-Leu-OH was serially diluted in assay buffer according to the protocol. The fluorescence was monitored by a fluorescence microplate reader (Bio-Tek FLx800) with a filter set of Excitation/Emission=485 \pm 20 nm/528 \pm 20 nm. (mean \pm S.D., n=2).

References:

1. Woessner, JF. Jr. and CJ. Taplin, *J. Biol. Chem.* **263**, 16918 (1988).
2. Woessner, JF. Jr. *FASEB J.* **5**, 2145 (1991).
3. Collier, IE. et al. *J. Biol. Chem.* **263**, 6579 (1988).
4. Salo, T. et al. *J. Biol. Chem.* **258**, 3058 (1983).
5. Salo, T. et al. *J. Biol. Chem.* **260**, 8526 (1985).
6. Stryer, L. *Annu. Rev. Biochem.* **47**, 819 (1978).