



SensoLyte® 520 MMP-12 Assay Kit *Fluorimetric*

Catalog #	71157
Unit Size	1 Kit
Kit Size	100 Assays (96-well) or 250 Assays (384-well)

This kit is optimized to detect MMP-12 activity using a 5-FAM/QXL™520 FRET peptide as substrate, with its fluorescence monitored at Ex/Em=490 nm/520 nm upon proteolytic cleavage. Ample materials are provided to perform 100 assays in a 96-well format or 250 assays in a 384-well format. The kit has the following features:

- **Convenient Format:** All essential assay components are included.
- **Optimized Performance:** Optimal conditions for the detection of MMP-12 activity.
- **Enhanced Value:** Less expensive than the sum of individual components.
- **High Speed:** Minimal hands-on time.
- **Assured Reliability:** Detailed protocol and references are provided.

USA and Canada Ordering Information

AnaSpec Corporate Headquarter

2149 O'Toole Ave.
San Jose, CA 95131
Toll-Free: 800-452-5530
Tel: 408-452-5055
Fax: 408-452-5059
E-mail: service@anaspec.com
Internet: www.anaspec.com

International Ordering Information

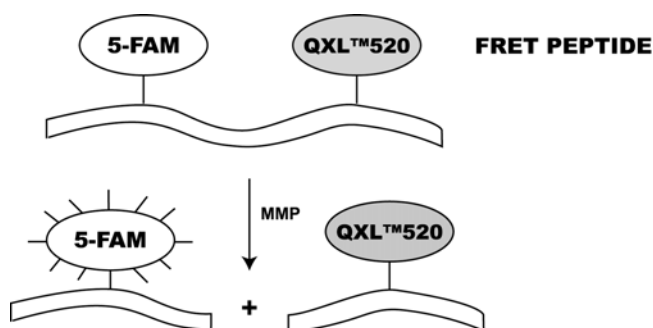
A list of international distributors is available at www.anaspec.com.

INTRODUCTION

Matrix metalloproteinases (MMPs) belong to a family of secreted or membrane-associated zinc endopeptidases capable of digesting extracellular matrix components.^{1,2} MMP-12 (macrophage elastase) is involved in smoke-induced emphysema,³ tumor,⁴ and other diseases. MMP-12 is secreted as a 54 kDa zymogen and becomes the mature 45 kDa active form after proteolytic cleavage.

The SensoLyte® 520 MMP-12 Assay Kit provides a convenient assay for high throughput screening of MMP-12 inducers and inhibitors. It detects MMP-12 activity in a variety of biological samples using a 5-FAM/QXL™520 fluorescence resonance energy transfer (FRET)⁵ peptide. In the intact FRET peptide, the fluorescence of 5-FAM is quenched by QXL™520. Upon cleavage into two separate fragments by MMP-12 (**Scheme 1**), the fluorescence of 5-FAM is recovered, and can be monitored at excitation/emission wavelengths = 490 nm/520 nm. With excellent fluorescence quantum yield and longer wavelength, 5-FAM shows less interference from autofluorescence of test compounds and cellular components. Compared to an EDANS/DABCYL FRET substrate, this 5-FAM/QXL™520 substrate provides better assay sensitivity.

The assays are performed in a convenient 96-well or 384-well microplate format.



Scheme 1. Proteolytic cleavage of 5-FAM/QXL™520 FRET peptide by MMPs.

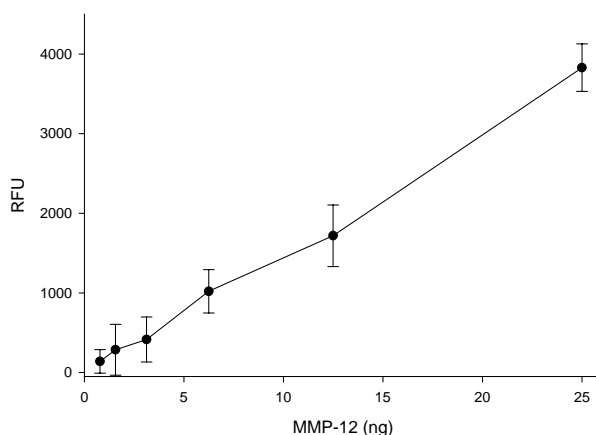


Figure 1. Sensitivity of the SensoLyte® 520 MMP-12 assay kit.

Purified MMP-12 was first activated with 1 mM APMA and then serially diluted in assay buffer. Enzyme at each dilution was mixed with MMP-12 FRET substrate and then incubated at RT for 30 min. Endpoint fluorescence signal was recorded at Ex/Em=490 nm/520 nm with cut off at 515 nm (FlexStation 384II, Molecular Devices). The assay is able to detect as low as 1 ng MMP-12 (mean±S.D., n=2). *Note: Sensitivity also depends on the endogenous activity of MMP-12 in different preparation. MMP-12 from different sources will vary in its endogenous activity.*

KIT COMPONENTS, STORAGE AND HANDLING

Note: Store all kit Components at -20 °C, and keep Components A and B away from light. If used frequently, Components D and E can be stored at 4 °C for convenience.

- Component A:** MMP-12 substrate (60 µL)
5-FAM/QXL™520 FRET peptide
Ex/Em=490 nm/520 nm upon cleavage
- Component B:** 5-FAM-Pro-Leu-OH, fluorescence reference standard (1 mM, 10 µL)
Ex/Em=490 nm/520 nm
- Component C:** APMA, 4-aminophenylmercuric acetate (1 M, 20 µL)
Caution: Organic mercury. Handle with care! Do not dispose into sink!
- Component D:** Assay buffer (20 mL)
- Component E:** Stop solution (10 mL)

OTHER MATERIALS REQUIRED (BUT NOT PROVIDED)

Purified MMP-12: AnaSpec Cat#72010.

96-well or 384-well microplate: Black microplate provides better signal to noise ratio.

Fluorescence microplate reader: Capable of detecting emission at 520 nm with excitation at 490 nm.

PROTOCOL

Note 1: For fluorometer calibration, please refer to Appendix II (recommended for first time users).

Note 2: Please use protocol A or B based on your needs.

Protocol A. Screening protease inhibitors using purified or recombinant MMP-12

1. Activate pro-MMP-12.

- Incubate pro-MMP-12 with 1 mM APMA (diluted Component C) for 2 h at 37°C. Activate pro-MMP-12 immediately before the experiment.
Note 1: Keep activated enzyme on ice. Avoid vigorously vortexing the enzyme. Prolonged storage of activated enzyme will further de-activate the enzyme.
Note 2: APMA can be diluted with assay buffer (Component D). APMA belongs to the organic mercury class of compounds and must be handled with care! Dispose according to appropriate regulations.
Note 3: Activation of zymogen by APMA at higher protein concentration is preferred. After activation, the enzyme may be further diluted.

2. Prepare working solutions.

Note: Warm all kit components until thawed to room temperature before starting the experiments.

- MMP-12 substrate solution: Dilute MMP-12 substrate (Component A) 1: 100 in assay buffer (Component D).

Table 1. MMP-12 substrate solution for one 96-well plate (100 assays).

Components	Volume
MMP-12 substrate (100X, Component A)	50 µL
Assay buffer (Component D)	4.95 mL
Total volume	5 mL

- MMP-12 diluent: Dilute activated MMP-12 to an appropriate concentration in assay buffer (Component D).

3. Set up enzymatic reaction.

- Add test compounds and MMP-12 diluent into microplate. The suggested total volume of MMP-12 diluent and test compound is 50 µL (96-well plate) or 20 µL (384-well plate).

- Simultaneously set up the following controls:
 - Positive control contains MMP-12 diluent without test compound.
 - Inhibitor control contains MMP-12 diluent and a known MMP-12 inhibitor.
 - Vehicle control contains MMP-12 diluent and vehicle used in delivering test compound (e.g. DMSO).
 - Test compound control contains assay buffer and test compound. Some test compounds have strong autofluorescence and may give false results.
 - Substrate control contains assay buffer only.
- Note: Use assay buffer (Component D) to bring the total volume of all the controls to 50 μ L (96-well plate) or 20 μ L (384-well plate).*

4. Pre-incubation.

- Incubate the plate at the desired temperature for enzymatic reaction (e.g. 25°C or 37°C) for 10-15 min. Also incubate MMP-12 substrate solution at the same temperature.

5. Initiate the enzymatic reaction.

- Add 50 μ L/well (96-well plate) or 20 μ L/well (384-well plate) of MMP-12 substrate solution to the sample and control wells. Mix the reagents by shaking the plate gently for 30 seconds.
- Measure fluorescence signal:

For kinetic reading: Immediately start measuring fluorescence intensity at Ex/Em=490 nm \pm 20 /520 \pm 20 nm and continuously record data every 5 min for 30 to 60 min.

For end-point reading: Incubate the reaction at 37°C for 30 to 60 min. Keep plate away from direct light. Optional: Add 50 μ L/well (96-well plate) or 20 μ L/well (384-well plate) of stop solution (Component E). Mix the reagents and measure fluorescence intensity at Ex/Em=490 \pm 20 nm/520 \pm 20 nm.

- Data analysis: Refer to Appendix I.

Protocol B. Measuring MMP-12 activity in biological samples.

Note: The FRET substrate in this kit can also be cleaved by MMP- 3, but not MMP-1, 2, 7, 8, 9, 13, and 14. If several MMPs are coexisting in your samples and you want to ensure the specific measurement of MMP-12's activity, then MMP-12 must first be isolated by immuno-affinity purification or other methods before measuring its specific activity using current assay kit.

1. Prepare MMP-12 containing biological samples.

- Collect synovial fluids or supernatant of cell culture media (e.g. stimulated fibroblast) and centrifuge for 10-15 min at 1,000X g, 4°C. Collect the supernatant and store at -70°C until use.
- Tissue samples should be homogenized in assay buffer (Component D) containing 0.1% (v/v) Triton-X 100, and then centrifuged for 15 min at 10000x g at 4°C. Collect the supernatant and store at -70°C until use.

Note: Triton-X 100 is not provided.

2. Activate pro-MMPs.

- Incubate the MMP containing-samples with APMA (Component C) at a final concentration of 1 mM in the assay buffer (Component D) for 2 h at 37°C. Activate MMP immediately before the experiment.

Note 1: Keep activated enzyme on ice. Avoid vigorously vortexing the enzyme. Prolonged storage will further de-activate the enzyme.

Note 2: APMA can be diluted with assay buffer (component D). APMA belongs to the organic mercury class of compounds and must be handled with care! Dispose according to appropriate regulations.

3. Prepare working solutions.

Note: Warm all kit components until thawed to room temperature before starting the experiments.

- **MMP-12 substrate solution:** Dilute MMP-12 substrate (Component A) 1: 100 in assay buffer (Component D).

Table 1. MMP-12 substrate solution for one 96-well plate (100 assays).

Components	Volume
MMP-12 substrate (100X, Component A)	50 µL
Assay buffer (Component D)	4.95 mL
Total volume	5 mL

- **MMP-12 diluent:** If using purified MMP-12 as a positive control, then dilute MMP-12 to an appropriate concentration in assay buffer (Component D).

Note: Pro-MMP-12 needs to be activated by APMA at higher protein concentration, and then diluted to a working concentration in assay buffer. Please refer to Step 2. Avoid vigorous vortexing of enzyme.

4. Set up the enzymatic reaction.

- Add 50 µL/well (96-well plate) or 20 µL/well (384-well plate) of MMP-12 containing sample.
- Set up the following control:
 - **Substrate control** contains assay buffer (50 µL/well for a 96-well plate or 20 µL/well for a 384-well plate).
 - **Positive control** contains MMP-12 diluent [50 µL/well (96-well plate) or 20 µL/well (384-well plate)].

5. Initiate the enzymatic reaction.

- Add 50 μL /well (96-well plate) or 20 μL /well (384-well plate) of MMP-12 substrate solution to the sample and control wells. Mix the reagents by shaking the plate gently for 30 sec.
- Measure fluorescence signal:
For kinetic reading: Immediately start measuring fluorescence intensity at $\text{Ex/Em}=490\text{ nm}\pm 20/520\pm 20\text{ nm}$ and continuously record data every 5 min for 30 to 60 min.
For end-point reading: Incubate the reaction at 37°C for 30 to 60 min. Keep plate away from direct light. Optional: Add 50 μL /well (96-well plate) or 20 μL /well (384-well plate) of stop solution (Component E). Mix the reagents and measure fluorescence intensity at $\text{Ex/Em}=490\pm 20\text{ nm}/520\pm 20\text{ nm}$.
- Data analysis: Refer to Appendix I.

Appendix I Data Analysis

- The fluorescence reading from the substrate control well represents the background fluorescence. Subtract this background reading from the readings of the other wells to get the relative fluorescence unit (RFU).
- For kinetics reading:
 - Plot data as RFU versus time for each sample. To convert RFU to concentration of the product of enzymatic reaction, please refer to Appendix II for setting up the fluorescence reference standard.
 - Determine the range of initial time points during which the reaction is linear. 10-15% conversion appears to be the optimal range.
 - Obtain the initial reaction velocity (V_0) in RFU/min. Determine the slope of the linear portion of the data plot.
 - A variety of data analyses can be done, e.g., determining inhibition %, EC_{50} , IC_{50} , K_m , K_i , etc.
- For endpoint reading:
 - Plot data as RFU versus concentration of test compounds or enzyme concentration (Figure 1).
 - A variety of data analyses can be done, e.g., determining inhibition %, EC_{50} , IC_{50} , etc.

Appendix II: Fluorometer Calibration

- **5-FAM fluorescence reference standard:** Dilute 1 mM 5-FAM-Pro-Leu-OH (Component B) to 5 μM in deionized water. Perform 1:2 serial dilutions to get concentrations of 2.5, 1.25, 0.625, 0.3125, 0.156, 0.078, and include a water blank. Add 50 μL /well (96-well plate) or 20 μL /well (384-well plate) of the serially diluted 5-FAM-Pro-Leu-OH from 5 μM to 0 nM.
- Add 50 μL /well (96-well plate) or 20 μL /well (384-well plate) of MMP-12 substrate solution (refer to Step 3 of the Standard Operation Protocol for preparing substrate solution).

Note: MMP-12 substrate solution should be added to the 5-FAM reference standard to correct for the absorptive quenching by the FRET peptide. If multiple concentrations of substrate are used, this step must be performed for each concentration.

- Optional: If the stop solution (Component E) was added into the enzymatic reaction before taking the end-point reading, the same volume of stop solution should be added to the reference standard wells for proper comparison.
- Plot 5-FAM fluorescence reference standard as RFU (relative fluorescence unit) versus concentration as in **Figure 2**.

Note: The final concentration of the 5-FAM-Pro-Leu-OH reference standard solutions is 2.5, 1.25, 0.625, 0.3125, 0.156, 0.078, 0.039, and 0 μM . This reference standard curve is used to calibrate for the variation of different instruments and for different batches of experiments. It is also an indicator of the amount of MMP-12 enzymatic reaction final product.

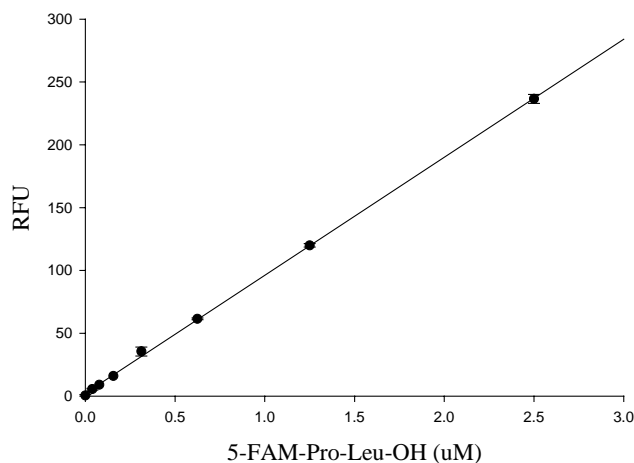


Figure 2. 5-FAM-Pro-Leu-OH reference standard curve.

5-FAM-Pro-Leu-OH was serially diluted in assay buffer according to the protocol. Fluorescence was monitored by a fluorescence microplate reader (FLx800, Bio-Tek) with a filter set of Excitation/Emission=485 \pm 20 nm/528 \pm 20 nm. (mean \pm S.D., n=2).

References

1. Woessner, JF. Jr. and C. J. Taplin, *J. Biol. Chem.* **263**, 16918 (1988).
2. Woessner, Jr., *FASEB J.* **5**, 2145 (1991).
3. Hautamaki, RD. et al. *Science* **277**, 2002 (1997).
4. Dong, Z. et al. *Cell.* **88**, 801-810 (1997).
5. Stryer, L. et al. *Annu. Rev. Biochem.* **47**, 819 (1978).