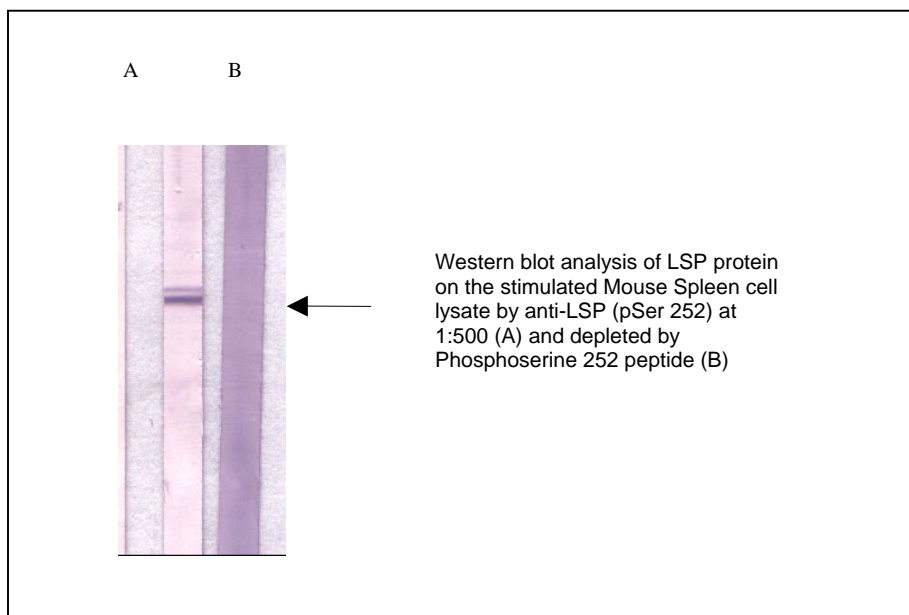




Product Data Sheet

Product Name:	Anti-LSP (pSer 252)
Catalog Number:	28161-025
Lot Number:	See label on vial
Product Description:	This polyclonal antibody is supplied as an epitope-affinity purified rabbit IgG, 25 µg in 125 µl of 1x PBS (pH 7.4) containing 0.05% sodium azide.
Immunogen:	A synthetic peptide (RQA-pS-IEL) corresponding to the carboxyl terminus of human LSP1 origin at the phosphorylated site of Serine 252.
Species Reactivity:	Species reactivity includes human, while others remain unknown.
Application Notes:	The following concentration ranges are recommended starting points for this product. Optimal working concentrations should be determined by the investigator for specific applications.
Western Blot:	0.5 to 2 µg/ml
IP*:	3.0-5.0 µg/extract from 10 ⁶ cells
(*Recommended but not tested)	



Background:

Leukocyte-specific protein (LSP; also known as Lymphocyte-specific protein, SP34 and pp52) is a 52-kD filamentous-actin-binding intracellular phosphoprotein (1). Human LSP1 is composed of 339 amino acids, which expressed in normal and transformed B-lineage cells and normal T-lymphocytes (2-3). Studies show that LSP1 plays an important role in cytoskeletal architecture and motility regulation as well as receptor-induced apoptosis (4-6). Research show that LSP1 has at least three and potentially a fourth F-actin binding domain located in the basic C-terminal half (7). This F-actin binding sites are also correspond to the caldesmon and the villin headpiece proteins. LSP1 246-295 containing sequences homologous to caldesmon F-actin binding site II (CII) can bind F-actin.

Storage:

Store at 2-8 °C for up to one year. Avoid repeated freezing and thawing.

References:

1. Li, Y. et al. *Blood* **96**, 1100 (2000).
2. Jongstra-Bilen, J. et al. *Blood* **96**, 1827 (2000).
3. Zhang, Q. et al. *J Immunol* 2053 (2000).
4. Jongstra-Bilen, J. et al. *Mol Immunol* **36**, 349 (1999).
5. Howard, T. et al. *Blood* **91**, 4786 (1998).
6. Klein, D. et al *J Immunol* **145**, 2967 (1990).

This product is for *in vitro* research use only.