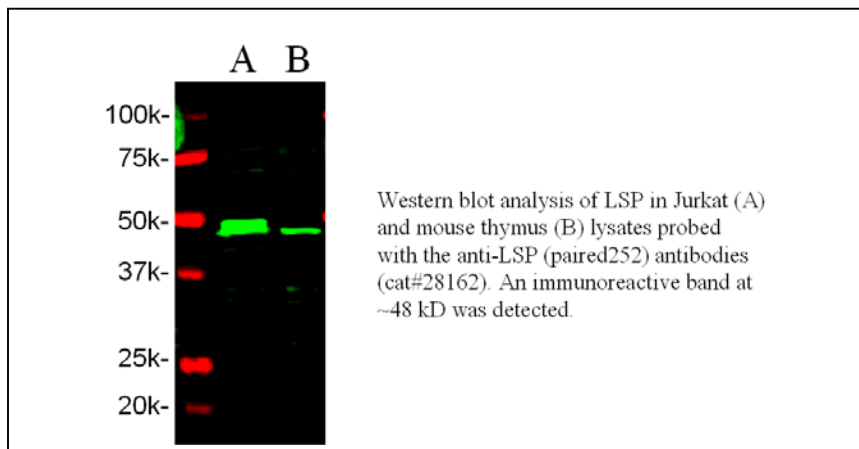




Product Data Sheet

Product Name:	Anti-LSP (paired252)
Catalog Number:	28162
Lot Number:	See label on vial
Product Description:	This polyclonal antibody is supplied as an epitope affinity purified rabbit IgG, 50 µg in 250 µl of 1x PBS (pH 7.4) containing 0.1% sodium azide.
Immunogen:	A synthetic peptide (RQASIEL) corresponding to amino acids 246-256 of human LSP1 origin.
Species Reactivity:	Species reactivity includes human and mouse, while others remain unknown.
Application Notes:	The following concentration ranges are recommended starting points for this product. Optimal working concentrations should be determined by the investigator for specific applications.
Western Blot:	0.5 to 2 µg/ml



Background:

Leukocyte-specific protein (LSP; also known as Lymphocyte-specific protein1, SP34 and pp52) is a 52-kd filamentous-actin-binding intracellular phosphoprotein (1). LSP is localized to the internal surface of the plasma membrane, cytoplasm, and actin filaments. LSP expressed in various eukaryotic cell lines such as the melanoma cell line A7 but not in other hematopoietic lineages (2-4). Studies showed that LSP play a key role in anti-IgM-induced apoptosis of the B-cell lymphoma line as well as cytoskeleton-driven regulation (5). LSP contains a high-affinity F-actin binding site, which recently is identified in the basic C-terminal half (6).

Storage:

Store at 4 °C for up to one year. Avoid repeated freezing and thawing.

References:

1. Li, Y. et al. *Blood* **96**, 1100 (2000).
2. Jongstra-Bilen, J. et al. *Blood* **96**, 1827 (2000).
3. Zhang, Q. et al. *J Immunol* 2053 (2000).
4. Jongstra-Bilen, J. et al. *Mol Immunol* **36**, 349 (1999).
5. Howard, T. et al. *Blood* **91**, 4786 (1998).
6. Klein, D. et al *J Immunol* **145**, 2967 (1990).

This product is for *in vitro* research use only.