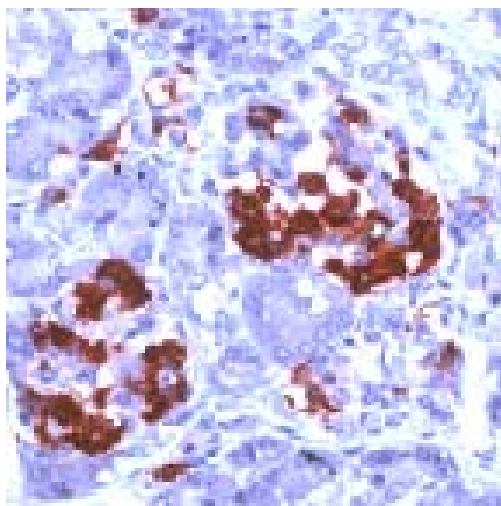




Product Data Sheet

Product Name:	Anti - Amylin Peptide
Catalog Number:	53223
Lot Number:	See label on vial
Product Description:	This affinity purified polyclonal antibody is supplied as 50 µg in 250 µl 1x PBS (pH 7.4) with 0.02% Sodium Azide.
Immunogen:	Rabbit polyclonal amylin peptide epitope specific antibody was raised against a synthetic peptide corresponding to a protein sequence derived from N-terminus of human Amylin peptide.
Species Reactivity:	Species reactivity includes human, others not known.
Application Notes:	<p>The following concentration ranges are recommended starting points for this product.</p> <p>WB: 2.5 to 5 µg/ml IHC (Formalin/paraffin)</p> <p>Working dilution: 1: 200 for 10 min at RT. Staining of formalin-fixed tissues requires boiling tissue sections in 10mM citrate buffer, pH 6.0 for 10 min followed by cooling at RT for 20 min.</p>



Left: Human Pancreas stained with anti-Amylin antibody

Positive Control: Pancreas

Cellular Localization: Cytoplasmic and/or nuclear.

Storage:

Store at 2-8°C for up to one year. Avoid repeated freezing and thawing.

This product is for *in vitro* research use only.