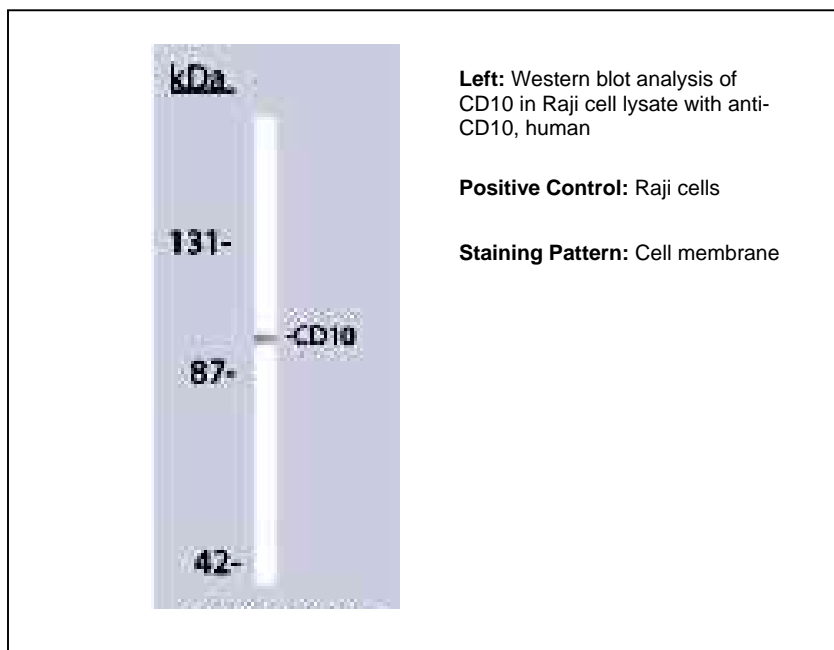




## Product Data Sheet

Product Name:	Anti-CD10, human
Catalog Number:	53313
Lot Number:	See label on vial
Product Description:	This product is supplied as 0.25 ml (at 200 µg/ml) of affinity purified antibody in 1X PBS (pH 7.4) with 0.2% BSA and 0.05% sodium azide.
Immunogen:	Rabbit anti-CD10 polyclonal antibody was raised against a recombinant protein encoding the amino acids 52-252 of human CD10.
Species Reactivity:	Species reactivity includes human, while others remain unknown.
Application Notes:	The following concentration ranges are recommended starting points for this product.

WB: 1.0-2.0 µg/ml for 2hrs at room temperature



**Background:**

CD10, also known as Common Acute Lymphocytic Leukemia Antigen (CALLA), is a cell surface enzyme with neutral metalloendopeptidase activity, which inactivates a variety of biologically active peptides. CD10 is expressed on the cells of lymphoblastic, Burkitt's, and follicular germinal center lymphomas, and on cells from patients with chronic myelocytic leukemia (CML). It is also expressed on the surface of normal early lymphoid progenitor cells, immature B cells within adult bone marrow and germinal center B cells within lymphoid tissue. CD10 is also present on breast myoepithelial cells, bile canaliculi, fibroblasts, with especially high expression on the brush border of kidney and gut epithelial cells.

**Storage:**

Store at 2-8 °C for up to one year. Avoid repeated freezing and thawing.