



## Anti-Tubulin- $\alpha$

**CATALOG NO.: 53929**

### **BACKGROUND:**

Microtubules, the major cytoskeletal elements found in all eukaryotic cells, consist of tubulin, which is a dimer of two 55 kDa subunits:  $\alpha$  and  $\beta$ . Microtubules play key roles in chromosome segregation in mitosis, intracellular transport, ciliary and flagellar bending, and structural support of the cytoskeleton.

### **SOURCE & REACTIVITY:**

Rabbit anti-tubulin  $\alpha$  polyclonal antibody was raised against a synthetic peptide derived from amino acids 426-450 of human tubulin  $\alpha$ . Species reactivity includes human, cow, pig, rat, mouse, frog and chicken, while others are not tested.

### **APPLICATION:**

The following concentration ranges are recommended starting points for this product.

### **IP**

### **WB**

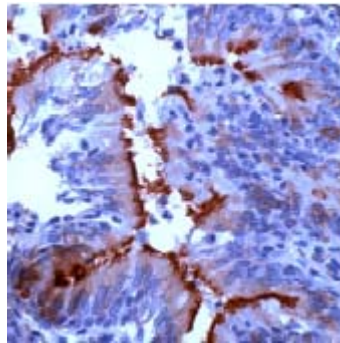
### **IHC (Formalin/paraffin)**

Working dilution: 1: 200 for 10 min at room temperature (RT)

Staining of formalin-fixed tissues requires boiling tissue sections in 10mM citrate buffer, pH 6.0 for 10 min followed by cooling at RT for 20 min.

Positive Control: Lung

Staining Pattern: Cytoplasmic



Human lung  
stained with anti-  
tubulin  $\alpha$  (Cat.  
#53929)

*This product is for in vitro research purposes only.*

### **STORAGE:**

0.25 ml of affinity purified antibody at 0.2 mg/ml in 1X PBS (pH 7.4) with 0.2% BSA and 0.05% sodium azide. Store at 2-8 °C for up to 1 year. Avoid repeated freeze thaw cycles.