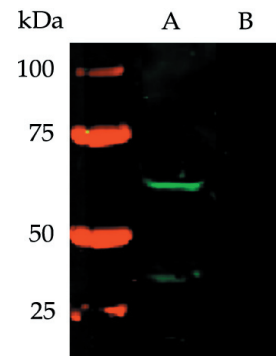


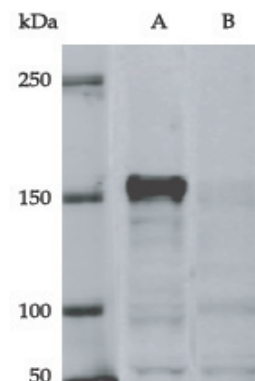
Z-Fish™ Antibodies

Zebrafish Specific Antibodies and Lysates

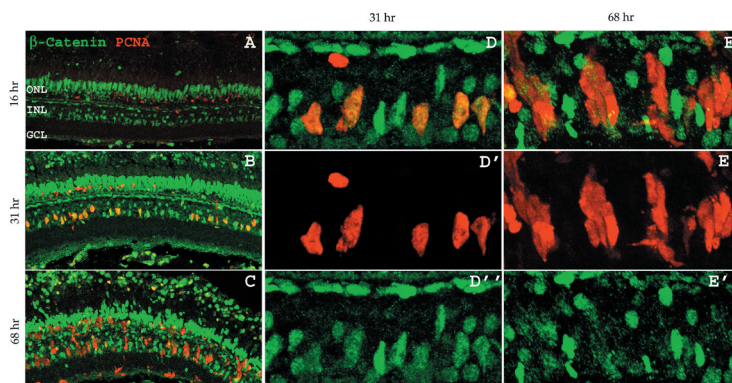
- Polyclonal non-phospho and phospho-specific antibodies raised in rabbits
- Antigen specific affinity purified
- Quality tested using Western blot and/or immunohistochemistry (IHC) as well as whole mount immunostaining with blocking peptide control
- Immunogen sequence designed to work specifically for zebrafish proteins in Western blot and/or immunohistochemistry applications
- Packaged in 150ul of 50% glycerol containing buffer to ensure long term stability at -20°C, good for at least 15 mini-Western blot gels
- Wide range of products including apoptosis and autophagy, cell cycle control, cytoskeleton, kinases and phosphatases, neuroscience, proteases, signal transduction, TLR Receptors and innate immunity and transcriptional regulation
- Continuous expansion of Z-Fish™ product line, with weekly introduction of antibodies in the field of pattern formation, cell migration, vascular development, neuroscience and development of the heart, eye and musculature and others
- Custom antibody production, labeling and assay development services available



Western blot of zebrafish lysate (5 dpf) with Z-Fish™ anti-p53 (CT) (cat# 55342). An immunoreactive band at ~53 kDa was detected (A); this band was blocked by the immunizing peptide (B). HiLyte Fluor™ 750 labeled goat anti-rabbit secondary antibody (cat# 28176-HF750) was used (Li-Cor Odyssey).



Western blot of ZF4 cell lysate (A) with Z-Fish™ anti-ROCK-1 (CT) (cat# 55430). An immunoreactive band at 155 kDa was detected. This band was blocked by the immunizing peptide (B).



Immunohistochemical staining of adult albino zebrafish retinas following 16 hr (A), 31 hr (B & D) and 68 hr (C & E) of light exposure. Tissue sections are labeled with rabbit polyclonal anti-beta catenin (cat#55364) (green) and mouse monoclonal anti-PCNA (red). (A-C) Beta-catenin staining is observed at all time points in the nuclei of cells in the outer nuclear layer (ONL) and inner nuclear layer (INL), but not in the ganglion cell layer (GCL). (D-E) Increased magnification of 31 hr (D-D') and 68 hr (E-E') time points. Image courtesy of Ryne Gorsuch and Dr. David Hyde (University of Notre Dame).



ISO 9001 Certified

Apoptosis and Autophagy	Cat #
Anti-AKT-3 (CT), Z-Fish™	55343
Anti-AKT-3 (IN), Z-Fish™	55344
Anti-Bcl2 (NT), Z-Fish™	55396
Anti-Bcl-xL (IN), Z-Fish™	55426
Anti-Caspase-2 (IN), Z-Fish™	55368
Anti-Caspase-2 (NT), Z-Fish™	55367
Anti-Caspase-3a (p12) (CT), Z-Fish™	55372
Anti-Caspase-3a (p17) (NT), Z-Fish™	55371
Anti-Caspase-3b (p12) (CT), Z-Fish™	55374
Anti-Caspase-3b (p17) (NT), Z-Fish™	55373
Anti-Caspase-8a (IN), Z-Fish™	55375
Anti-Caspase-9 (IN1) (p37), Z-Fish™	55377
Anti-Caspase-9 (IN2) (p37), Z-Fish™	55378
Anti-Caspase-9 (IN3) (p10), Z-Fish™	55379
Anti-Caspase-a (IN), Z-Fish™	55369
Anti-Caspase-b (IN), Z-Fish™	55370
Anti-DR6 (IN), Z-Fish™	55384
Anti-Fas (IN), Z-Fish™	55436
Anti-FasL (NT), Z-Fish™	55442
Anti-Mcl-1a (IN), Z-Fish™	55433
Anti-Mcl-1b (IN), Z-Fish™	55395
Anti-TICAM (IN), Z-Fish™	55425
Anti-TNF-alpha (IN), Z-Fish™	55383
Anti-TRAIL-1b (IN), Z-Fish™	55401

Protease	Cat #
Anti-MMP-2 (IN), Z-Fish™	55111
Anti-MMP-9 (hinge), Z-Fish™	55345
Anti-MMP-11 (hinge), Z-Fish™	55113
Anti-MMP-13 (hinge), Z-Fish™	55114
Anti-MMP-14-alpha (hinge), Z-Fish™	55115
Anti-MMP-14-beta (CT), Z-Fish™	55380
Anti-MMP-14-beta (hinge), Z-Fish™	55116
Anti-MMP-16-alpha (hinge), Z-Fish™	55117
Anti-MMP-17 (hinge), Z-Fish™	55358
Anti-MMP-18 (hinge), Z-Fish™	55403
Anti-MMP-18 (IN), Z-Fish™	55402
Anti-MMP-21 (IN), Z-Fish™	55404
Anti-MMP-24 (hinge), Z-Fish™	55346
Anti-MMP-28 (hinge), Z-Fish™	55405

Cell Cycle Control	Cat #
Anti-Chk2 (CT), Z-Fish™	55435
Anti-Cyclin D1 (CT), Z-Fish™	55400
Anti-Cyclin D1 (NT), Z-Fish™	55399
Anti-GSK3a (CT), Z-Fish™	55397
Anti-GSK3b (NT), Z-Fish™	55424
Anti-p27 Kip1 (CT), Z-Fish™	55434
Anti-p53 (CT), Z-Fish™	55342
Anti-PCNA (IN), Z-Fish™	55421
Anti-PCNA (NT), Z-Fish™	55420
Anti-Rb1 (IN), Z-Fish™	55432
Anti-ROCK-1 (CT), Z-Fish™	55430
Anti-ROCK-2-alpha (CT), Z-Fish™	55431

Cytoskeleton	Cat #
Anti-Actin-beta (CT), Z-Fish™	55339
Anti-Actin-beta (NT), Z-Fish™	55338
Anti-keratin-18 (IN-1), Z-Fish™	55357
Anti-MAP LC3-alpha/beta (IN), Z-Fish™	55355
Anti-Myh9I2 (CT), Z-Fish™	55363
Anti-Catenin-beta 1/2 (paired674), Z-Fish™	55366
Anti-Catenin-beta-1/2 (pSer674), Z-Fish™	55365
Anti-Catenin-beta-1/2 (NT), Z-Fish™	55364

Signal Transduction and Others	Cat #
Anti-AID (CT), Z-Fish™	55388
Anti-ERK-1/2 (CT), Z-Fish™	55341
Anti-JNK-1/2/3 (CT), Z-Fish™	55354
Anti-MyD88 (CT), Z-Fish™	55449
Anti-p38 MAPK-a/b (CT), Z-Fish™	55359
Anti-SARM (CT), Z-Fish™	55381
Anti-Sox-9a/b (paired183), Z-Fish™	55352
Anti-Sox-9a/b (pSer183), Z-Fish™	55353
Anti-TLR-3 (CT), Z-Fish™	55356
Anti-TLR-9 (IN), Z-Fish™	55351

Zebrafish Lysates	Cat #
Z-Fish™ Embryonic Lysate (24 hpf)	55347
Z-Fish™ Embryonic Lysate (48 hpf)	55348
Z-Fish™ Embryonic Lysate (72 hpf)	55349
Z-Fish™ Lysate (5 dpf)	55350

Custom Antibody Service
Antibody Labeling
Custom Assay Development