

SensoLyte[®]

Assay Kits

Fluorimetric Assays



Certified to ISO 9001:2008

Leveraging our proprietary detection technologies with world-class peptide expertise, AnaSpec, EGT Group has developed the SensoLyte[®] 520 line of long wavelength, highly sensitive protease assays for HIV, HCV, Renin, MMPs, Cathepsins and many other proteases.

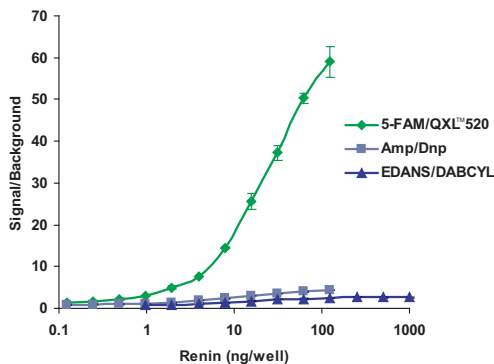


Figure 1. After 30 mins of renin incubation, signal increases up to 60 fold with the QXL™ 520/5-FAM FRET substrate (SensoLyte[®] 520 Renin Assay Kit, Cat# 72040), 2.5 fold for an existing EDANS/DABCYL and 4-fold for a Dnp/Am renin FRET substrates.

- ✓ Highly sensitive
- ✓ Long wavelength, Ex/Em = 490/520 nm
- ✓ FRET based - employs FRET pairs, such as QXL™ 520/HiLyte Fluor™ 488, QXL™ 520/5-FAM or fluorimetric based assays - Rhodamine 110
- ✓ Minimal autofluorescence/background
- ✓ Convenient 96-well plate format



INTEGRATING PROTEOMIC AND GENOMIC SOLUTIONS

To view the full listing of SensoLyte[®] assay kits, please scan QR code



SensoLyte[®]

Assay Kits

Fluorimetric Assays



Certified to ISO 9001:2008

Protease Activity Assay Kits for

Cathepsins - B, D, G, K & S
Viral Research: HCV, HIV, WNV
Epigenetics: HDAC, LSD1, SIRT 1 & 2, DUB
MMP's (Matrix Metalloproteases)
Renin
Coagulation Cascade: Thrombin, Plasmin, Factor Xa

Quantitation Assay Kits

Glutathione, GST, Thiol
NADP/NADPH

Reporter Enzyme Assay Kits

Alkaline Phosphatase
Peroxidase
 β -Galactosidase

ELISA Assay Kits - colorimetric

Anti- β -Amyloid (1-40) or (1-42); human or mouse/rat
Anti-MOG (1-125) IgG, human, mouse or rat
Anti-PLP (139-151) or (178-191) IgG
 α -Synuclein

Other Products & Services

Recombinant Proteins
Custom Assay Development
Custom Screening Service
Custom Protein/Antibody Labeling Service

Product Citations

Stewart, CE. et al. (2012). uPAR regulates bronchial epithelial repair in vitro and is elevated in asthmatic epithelium. *Thorax* **67**, 477.
Petrey, AC. et al. (2012). Excessive activity of cathepsin K is associated with cartilage defects in a zebrafish model of mucopolysaccharidosis II. *Dis Models Mech* **5**, 177.
Chen, W. et al. (2012). Cryptotanshinone activates p38/JNK and inhibits Erk1/2 leading to caspase-independent cell death in tumor cells. *Cancer Prevention Res* **5**, 778.
Shoeneman, JK. et al. (2012). Expression and Function of Survivin in Canine Osteosarcoma. *Cancer Res* **72**, 249.
Oyama, J. et al. (2012). Repetitive hyperthermia attenuates progression of left ventricular hypertrophy and increases telomerase activity in hypertensive rats. *Am J Physiol Heart Circ Physiol* **302**, H2092.

"We have already ordered several AnaSpec assay kits and are pleased with the products. Thank you..." *UCLA*

"You provide reagents that are difficult to find elsewhere. MMP activity assays, particularly the Sensolyte[®] Plus with monoclonal Abs to pull out the MMP of interest are great. Additionally, your customer service and technical people are extraordinarily helpful..." *Biotech Company*

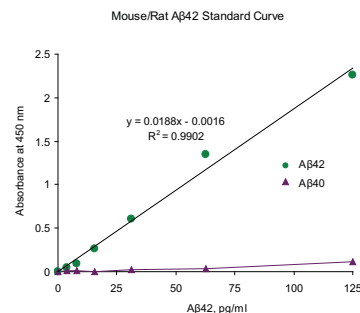


Figure 2. An example of a standard curve generated using the Sensolyte[®] Anti-Human β -Amyloid (1-42) ELISA Assay Kit, Cat# 55552.