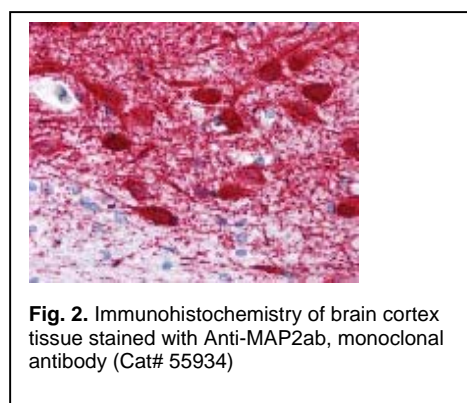
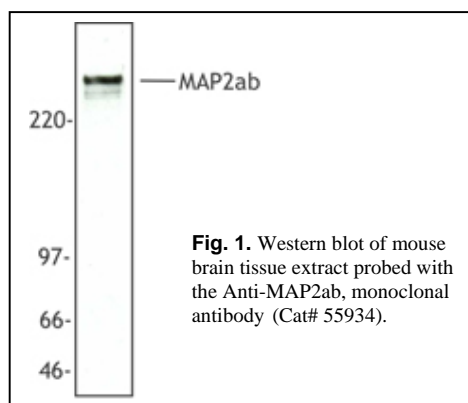




## Product Data Sheet

Product Name:	<b>Anti-MAP2ab antibody, monoclonal</b> (Microtubule Associated Protein 2ab)
Catalog Number:	55934
Lot Number:	See label on vial
Clone Number:	MT-08
Isotype:	IgG <sub>1</sub>
Light Chain Type:	kappa
Host:	Mouse
Product Description:	This monoclonal antibody is supplied as 0.25 ml affinity purified mouse IgG <sub>1</sub> at 200 µg/ml in 1X PBS (pH 7.4) with 0.2% BSA and 0.05% sodium azide.
Immunogen:	MAP2ab monoclonal antibody was raised against a microtubule protein from bovine brain enriched for kinesin.
Species Reactivity:	Species reactivity includes human, mouse, and pig, while others remain unknown. This antibody recognizes an epitope (aa 1375-1395) located in central domain of molecule Microtubule Associated Protein 2ab.
Application Notes:	The following concentration ranges are recommended starting points for this product. The investigator should determine the optimal working concentrations for specific applications.
ELISA:	1:5,000-20,000
Western blot:	1:1,000
Immunohistochemistry:	1:100



**Background:**

Microtubule associated protein 2 also known as MAP2, has three isoforms that include two high molecular weight forms MAP2A and MAP2B (~280 kDa), and a low molecular weight form MAB2C (~70 kDa). MAP2 belongs to the microtubule-associated protein family and expressed in the nervous system. The exact function of MAP2 is unknown but MAPs may stabilize the microtubules against depolymerization. They also seem to have a stiffening effect on microtubules. MAP2 has been shown to interact with Fyn, Grb2, PRKACA, and CPEB1.

**Storage:**

Store at 2-8 °C for up to one year. Avoid repeated freezing and thawing.

**References:**

1. Garner, CC. et al. *Nature* **336**,674 (1988).
2. Kindler, S. et al. *Mol Brain Res* **26**,218 (1994).
3. Chang, L. et al. *Dev Cell* **4**,521(2003).

**This product is for *in vitro* research use only.**